

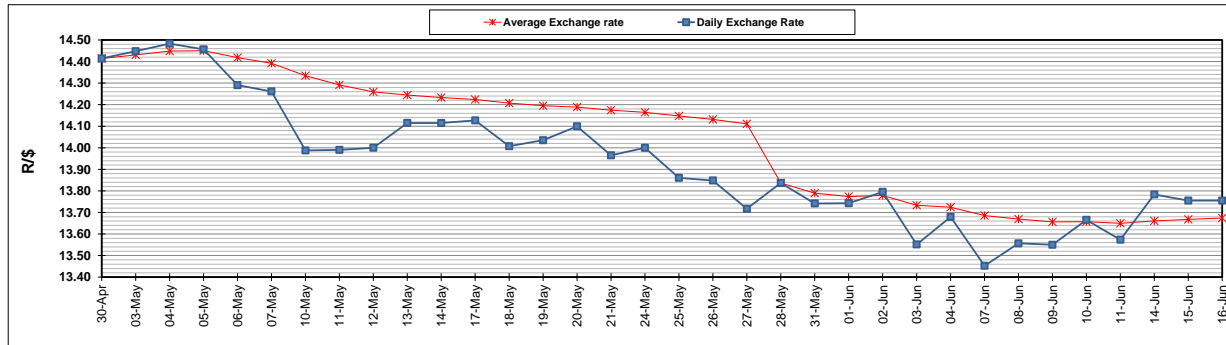
	PETROL 95 ULP	PETROL 93 ULP & LRP	DIESEL 0.05%	DIESEL 0.005%	ILL. PAR.
GAUTENG PUMP PRICE (SA c/l) AS FROM 02/06/2021	1,713.000	1,691.000	-	-	-
WHOLESALE PRICE (SA c/l) AS FROM 02/06/2021	-	-	1,466.620	1,471.020	877.488
SINGLE NATIONAL MAXIMUM RETAIL PRICE	-	-	-	-	1,102.000
BASIC FUEL PRICE - 16/06/2021 (SA c/l)	740.613	732.696	726.755	729.805	702.787
PRESS RELEASE CONTRIBUTION TO BFP 02/06/2021 - 16/06/2021 (SA c/l)	717.170	705.170	679.630	684.030	664.128
UNIT OVER/(UNDER) RECOVERY - 16/06/2021 (SA c/l)	(23.443)	(27.526)	(47.125)	(45.775)	(38.659)
AVERAGE BASIC FUEL PRICE 28/05/2021 - 16/06/2021	716.468	708.232	697.886	701.403	676.589
AVERAGE UNIT OVER/(UNDER) RECOVERY 28/05/2021 - 16/06/2021	2.845	(0.920)	(22.542)	(21.873)	(16.746)

ANALYSIS MOVEMENT OF AVERAGE OVER/(UNDER) RECOVERY

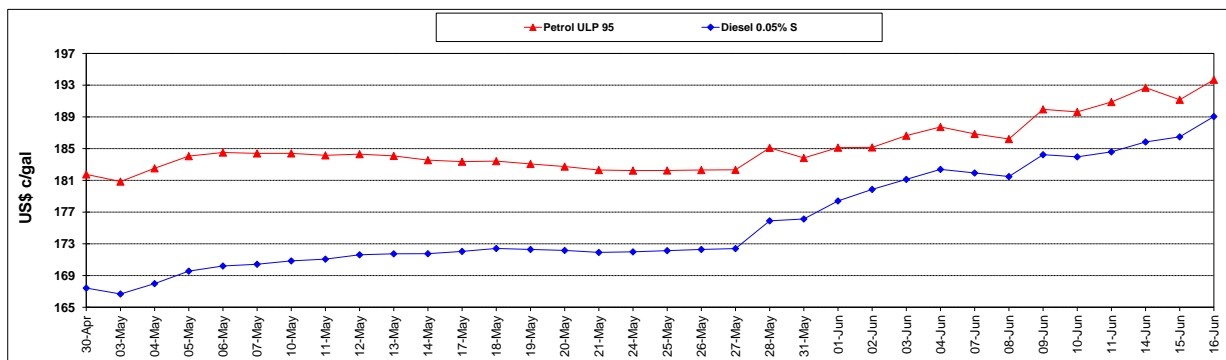
	PETROL 95	PETROL 93	DIESEL 0.05%	DIESEL 0.005%	ILL. PAR.
- MOVEMENT IN INTERNATIONAL PRODUCT PRICES	(20.047)	(23.548)	(44.840)	(44.283)	(38.365)
- MOVEMENT IN EXCHANGE RATE	22.892	22.629	22.298	22.410	21.618
AVERAGE UNIT OVER/(UNDER) RECOVERY 28/05/2021 - 16/06/2021	2.845	(0.920)	(22.542)	(21.873)	(16.746)

R/\$ EXCHANGE RATE - (R/\$13.7550- 16/06/2021)

EXCHANGE RATE USED IN BASIC FUEL PRICE



INTERNATIONAL PRODUCT PRICES OF BASKET USED IN BASIC FUEL PRICE



BASIC FUEL PRICE IN SA CENTS PER LITRE

